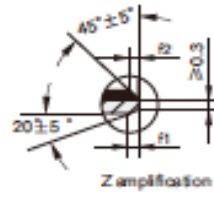
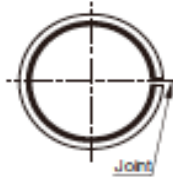
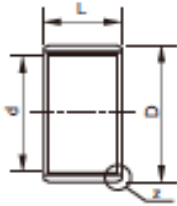
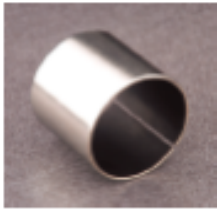


# DU Metric Cylindrical Bushes



Unit: mm

Part No.	OD Tolerance		ID After Fixed	Wall Thickness	L +0.025 -0.025	Housing Bore (H7)	Shaft Dia (f7)		f1	f2
MB0610DU	8	+0.055	6.055	1.005	10	8	+0.015	6	0.6±0.3	0.3±0.2
		-0.025	5.990	0.998			0	-0.022		
MB0808DU	10	+0.055	8.055	1.005	8	10	+0.015	8	0.6±0.3	0.3±0.2
		-0.025	7.990	0.998			0	-0.028		
MB0810DU	10	+0.055	8.055	1.005	10	10	+0.015	8	0.6±0.3	0.3±0.2
		-0.025	7.990	0.998			0	-0.028		
MB0812DU	10	+0.055	8.055	1.005	12	10	+0.015	8	0.6±0.3	0.3±0.2
		-0.025	7.990	0.998			0	-0.028		
MB1010DU	12	+0.065	10.058	1.005	10	12	+0.018	10	0.6±0.3	0.3±0.2
		-0.030	9.990	0.998			0	-0.028		
MB1012DU	12	+0.065	10.058	1.005	12	12	+0.018	10	0.6±0.3	0.3±0.2
		-0.030	9.990	0.998			0	-0.028		
MB1013.5DU	12	+0.065	10.058	1.005	13.5	12	+0.018	10	0.6±0.3	0.3±0.2
		-0.030	9.990	0.998			0	-0.028		
MB1015DU	12	+0.065	10.058	1.005	15	12	+0.018	10	0.6±0.3	0.3±0.2
		-0.030	9.990	0.998			0	-0.028		
MB1020DU	12	+0.065	10.058	1.005	20	12	+0.018	10	0.6±0.3	0.3±0.2
		-0.030	9.990	0.998			0	-0.028		
MB1212DU	14	+0.065	12.058	1.005	12	14	+0.018	12	0.6±0.3	0.3±0.2
		-0.030	11.990	0.998			0	-0.034		
MB1215DU	14	+0.065	12.058	1.005	15	14	+0.018	12	0.6±0.3	0.3±0.2
		-0.030	11.990	0.998			0	-0.034		
MB1225DU	14	+0.065	12.058	1.005	25	14	+0.018	12	0.6±0.3	0.3±0.2
		-0.030	11.990	0.998			0	-0.034		
MB1415DU	16	+0.065	14.058	1.005	15	16	+0.018	14	0.6±0.3	0.3±0.2
		-0.030	13.990	0.998			0	-0.034		
MB1425DU	16	+0.065	14.058	1.005	25	16	+0.018	14	0.6±0.3	0.3±0.2
		-0.030	13.990	0.998			0	-0.034		
MB1510DU	17	+0.065	15.058	1.005	10	17	+0.018	15	0.6±0.3	0.3±0.2
		-0.030	14.990	0.998			0	-0.034		
MB1512DU	17	+0.065	15.058	1.005	12	17	+0.018	15	0.6±0.3	0.3±0.2
		-0.030	14.990	0.998			0	-0.034		
MB1515DU	17	+0.065	15.058	1.005	15	17	+0.018	15	0.6±0.3	0.3±0.2
		-0.030	14.990	0.998			0	-0.034		
MB1525DU	17	+0.065	15.058	1.005	25	17	+0.018	15	0.6±0.3	0.3±0.2
		-0.030	14.990	0.998			0	-0.034		
MB1530DU	17	+0.065	15.058	1.005	30	17	+0.018	15	0.6±0.3	0.3±0.2
		-0.030	14.990	0.998			0	-0.034		
MB1612DU	18	+0.065	16.058	1.005	12	18	+0.018	16	0.6±0.3	0.3±0.2
		-0.030	15.990	0.998			0	-0.034		
MB1615DU	18	+0.065	16.058	1.005	15	18	+0.018	16	0.6±0.3	0.3±0.2
		-0.030	15.990	0.998			0	-0.034		
MB1620DU	18	+0.065	16.058	1.005	20	18	+0.018	16	0.6±0.3	0.3±0.2
		-0.030	15.990	0.998			0	-0.034		
MB1720DU	19	+0.075	17.061	1.005	20	19	+0.021	17	0.6±0.3	0.3±0.2
		-0.035	16.990	0.998			0	-0.034		
MB1815DU	20	+0.075	18.061	1.005	15	20	+0.021	18	0.6±0.3	0.3±0.2
		-0.035	17.990	0.998			0	-0.034		
MB1825DU	20	+0.075	18.061	1.005	25	20	+0.021	18	0.6±0.3	0.3±0.2
		-0.035	17.990	0.998			0	-0.034		
MB2015DU	23	+0.075	20.071	1.505	15	23	+0.021	20	0.7±0.3	0.5±0.3
		-0.035	19.990	1.475			0	-0.041		
MB2020DU	23	+0.075	20.071	1.505	20	23	+0.021	20	0.7±0.3	0.5±0.3
		-0.035	19.990	1.475			0	-0.041		
MB2025DU	23	+0.075	20.071	1.505	25	23	+0.021	20	0.7±0.3	0.5±0.3
		-0.035	19.990	1.475			0	-0.041		
MB2030DU	23	+0.075	20.071	1.505	30	23	+0.021	20	0.7±0.3	0.5±0.3
		-0.035	19.990	1.475			0	-0.041		

# DU Metric Cylindrical Bushes

Part No.	OD Tolerance	ID After Fixed	Wall Thickness	L +0.025 -0.025	Housing Bore (H7)	Shaft Dia (f7)	f1	f2		
MB2035DU	+0.075	20.071	1.505	35	23	+0.021	20	-0.020	0.7±0.3	0.5±0.3
	+0.035	19.990	1.475			0		-0.041		
MB2220DU	+0.075	22.071	1.505	20	25	+0.021	22	-0.020	0.7±0.3	0.5±0.3
	+0.035	21.990	1.475			0		-0.041		
MB2225DU	+0.075	22.071	1.505	25	25	+0.021	22	-0.020	0.7±0.3	0.5±0.3
	+0.035	21.990	1.475			0		-0.041		
MB2415DU	+0.075	24.071	1.505	15	27	+0.021	24	-0.020	0.7±0.3	0.5±0.3
	+0.035	23.990	1.475			0		-0.041		
MB2420DU	+0.075	24.071	1.505	20	27	+0.021	24	-0.020	0.7±0.3	0.5±0.3
	+0.035	23.990	1.475			0		-0.041		
MB2425DU	+0.075	24.071	1.505	25	27	+0.021	24	-0.020	0.7±0.3	0.5±0.3
	+0.035	23.990	1.475			0		-0.041		
MB2430DU	+0.075	24.071	1.505	30	27	+0.021	24	-0.020	0.7±0.3	0.5±0.3
	+0.035	23.990	1.475			0		-0.041		
MB2515DU	+0.075	25.071	1.505	15	28	+0.021	25	-0.020	0.7±0.3	0.5±0.3
	+0.035	24.990	1.475			0		-0.041		
MB2520DU	+0.075	25.071	1.505	20	28	+0.021	25	-0.020	0.7±0.3	0.5±0.3
	+0.035	24.990	1.475			0		-0.041		
MB2525DU	+0.075	25.071	1.505	25	28	+0.021	25	-0.020	0.7±0.3	0.5±0.3
	+0.035	24.990	1.475			0		-0.041		
MB2530DU	+0.075	25.071	1.505	30	28	+0.021	25	-0.020	0.7±0.3	0.5±0.3
	+0.035	24.990	1.475			0		-0.041		
MB2540DU	+0.075	25.071	1.505	40	28	+0.021	25	-0.020	0.7±0.3	0.5±0.3
	+0.035	24.990	1.475			0		-0.041		
MB2550DU	+0.075	25.071	1.505	50	28	+0.021	25	-0.020	0.7±0.3	0.5±0.3
	+0.035	24.990	1.475			0		-0.041		
MB2820DU	+0.085	28.085	2.005	20	32	+0.025	28	-0.020	1.2±0.4	0.5±0.3
	+0.045	27.990	1.970			0		-0.041		
MB2825DU	+0.085	28.085	2.005	25	32	+0.025	28	-0.020	1.2±0.4	0.5±0.3
	+0.045	27.990	1.970			0		-0.041		
MB3015DU	+0.085	30.085	2.005	15	34	+0.025	30	-0.020	1.2±0.4	0.5±0.3
	+0.045	29.990	1.970			0		-0.041		
MB3020DU	+0.085	30.085	2.005	20	34	+0.025	30	-0.020	1.2±0.4	0.5±0.3
	+0.045	29.990	1.970			0		-0.041		
MB3025DU	+0.085	30.085	2.005	25	34	+0.025	30	-0.020	1.2±0.4	0.5±0.3
	+0.045	29.990	1.970			0		-0.041		
MB3030DU	+0.085	30.085	2.005	30	34	+0.025	30	-0.020	1.2±0.4	0.5±0.3
	+0.045	29.990	1.970			0		-0.041		
MB3040DU	+0.085	30.085	2.005	40	34	+0.025	30	-0.020	1.2±0.4	0.5±0.3
	+0.045	29.990	1.970			0		-0.041		
MB3230DU	+0.085	32.085	2.005	30	36	+0.025	32	-0.025	1.2±0.4	0.5±0.3
	+0.045	31.990	1.970			0		-0.050		
MB3240DU	+0.085	32.085	2.005	40	36	+0.025	32	-0.025	1.2±0.4	0.5±0.3
	+0.045	31.990	1.970			0		-0.050		
MB3520DU	+0.085	35.085	2.005	20	39	+0.025	35	-0.025	1.2±0.4	0.5±0.3
	+0.045	34.990	1.970			0		-0.050		
MB3530DU	+0.085	35.085	2.005	30	39	+0.025	35	-0.025	1.2±0.4	0.5±0.3
	+0.045	34.990	1.970			0		-0.050		
MB3540DU	+0.085	35.085	2.005	40	39	+0.025	35	-0.025	1.2±0.4	0.5±0.3
	+0.045	34.990	1.970			0		-0.050		
MB3550DU	+0.085	35.085	2.005	50	39	+0.025	35	-0.025	1.2±0.4	0.5±0.3
	+0.045	34.990	1.970			0		-0.050		
MB4026DU	+0.085	40.085	2.005	26	44	+0.025	40	-0.025	1.2±0.4	0.5±0.3
	+0.045	39.990	1.970			0		-0.050		
MB4030DU	+0.085	40.085	2.005	30	44	+0.025	40	-0.025	1.2±0.4	0.5±0.3
	+0.045	39.990	1.970			0		-0.050		
MB4048DU	+0.085	40.085	2.005	48	44	+0.025	40	-0.025	1.2±0.4	0.5±0.3
	+0.045	39.990	1.970			0		-0.050		
MB4050DU	+0.085	40.085	2.005	50	44	+0.025	40	-0.025	1.2±0.4	0.5±0.3
	+0.045	39.990	1.970			0		-0.050		
MB4520DU	+0.085	45.105	2.505	20	50	+0.025	45	-0.025	1.8±0.6	0.6±0.3
	+0.045	44.990	2.460			0		-0.050		
MB4550DU	+0.085	45.105	2.505	50	50	+0.025	45	-0.025	1.8±0.6	0.6±0.3
	+0.045	44.990	2.460			0		-0.050		
MB5030DU	+0.100	50.110	2.505	30	55	+0.030	50	-0.025	1.8±0.6	0.6±0.3
	+0.055	49.990	2.460			0		-0.050		
MB5040DU	+0.100	50.110	2.505	40	55	+0.030	50	-0.025	1.8±0.6	0.6±0.3
	+0.055	49.990	2.460			0		-0.050		
MB5050DU	+0.100	50.110	2.505	50	55	+0.030	50	-0.025	1.8±0.6	0.6±0.3
	+0.055	49.990	2.460			0		-0.050		
MB5060DU	+0.100	50.110	2.505	60	55	+0.030	50	-0.025	1.8±0.6	0.6±0.3
	+0.055	49.990	2.460			0		-0.050		
MB6030DU	+0.100	60.110	2.505	30	65	+0.030	60	-0.030	1.8±0.6	0.6±0.3
	+0.055	59.990	2.460			0		-0.060		
MB6040DU	+0.100	60.110	2.505	40	65	+0.030	60	-0.030	1.8±0.6	0.6±0.3
	+0.055	59.990	2.460			0		-0.060		

# DU Metric Cylindrical Bushes



Part No.	OD Tolerance		ID After Fixed	Wall Thickness	L +0.025 -0.025	Housing Bore (H7)		Shaft Dia (f7)		f1	f2
MB6050DU	65	+0.100	60.110	2.505	50	65	+0.030	60	-0.030	1.8±0.6	0.6±0.3
		+0.055					0		-0.060		
MB6060DU	65	+0.100	60.110	2.505	60	65	+0.030	60	-0.030	1.8±0.6	0.6±0.3
		+0.055					0		-0.060		
MB6070DU	65	+0.100	60.110	2.505	70	65	+0.030	60	-0.030	1.8±0.6	0.6±0.3
		+0.055					0		-0.060		
MB6560DU	70	+0.100	65.110	2.505	60	70	+0.030	65	-0.030	1.8±0.6	0.6±0.3
		+0.055					0		-0.060		
MB6570DU	70	+0.100	65.110	2.505	70	70	+0.030	65	-0.030	1.8±0.6	0.6±0.3
		+0.055					0		-0.060		
MB7040DU	75	+0.100	70.110	2.505	40	75	+0.030	70	-0.030	1.8±0.6	0.6±0.3
		+0.055					0		-0.060		
MB7050DU	75	+0.100	70.110	2.505	50	75	+0.030	70	-0.030	1.8±0.6	0.6±0.3
		+0.055					0		-0.060		
MB7060DU	75	+0.100	70.110	2.505	60	75	+0.030	70	-0.030	1.8±0.6	0.6±0.3
		+0.055					0		-0.060		
MB7560DU	80	+0.100	75.110	2.505	60	80	+0.030	75	-0.030	1.8±0.6	0.6±0.3
		+0.055					0		-0.060		
MB8060DU	85	+0.120	80.155	2.490	60	85	+0.035	80	0	1.8±0.6	0.6±0.3
		+0.070					0		-0.046		
MB80100DU	85	+0.120	80.155	2.490	100	85	+0.035	80	0	1.8±0.6	0.6±0.3
		+0.070					0		-0.054		
MB8080DU	85	+0.120	80.155	2.490	80	85	+0.035	80	0	1.8±0.6	0.6±0.3
		+0.070					0		-0.054		
MB8560DU	90	+0.120	85.155	2.490	60	90	+0.035	85	0	1.8±0.6	0.6±0.3
		+0.070					0		-0.054		
MB9060DU	95	+0.120	90.155	2.490	60	95	+0.035	90	0	1.8±0.6	0.6±0.3
		+0.070					0		-0.054		
MB9560DU	100	+0.120	95.155	2.490	60	100	+0.035	95	0	1.8±0.6	0.6±0.3
		+0.070					0		-0.054		
MB95100DU	100	+0.120	95.155	2.490	100	100	+0.035	95	0	1.8±0.6	0.6±0.3
		+0.070					0		-0.054		
MB100115DU	105	+0.120	100.155	2.490	115	105	+0.035	100	0	1.8±0.6	0.6±0.3
		+0.070					0		-0.054		
MB10060DU	105	+0.120	100.155	2.490	60	105	+0.035	100	0	1.8±0.6	0.6±0.3
		+0.070					0		-0.054		
MB110115DU	115	+0.120	110.155	2.490	115	115	+0.035	110	0	1.8±0.6	0.6±0.3
		+0.070					0		-0.054		
MB11570DU	120	+0.170	115.155	2.465	70	120	+0.035	115	0	1.8±0.6	0.6±0.3
		+0.100					0		-0.054		
MB120100DU	125	+0.170	120.210	2.465	100	125	+0.04	120	0	1.8±0.6	0.6±0.3
		+0.100					0		-0.054		
MB125100DU	130	+0.170	125.210	2.465	100	130	+0.04	125	0	1.8±0.6	0.6±0.3
		+0.100					0		-0.063		
MB130100DU	135	+0.170	130.210	2.465	100	135	+0.04	130	0	1.8±0.6	0.6±0.3
		+0.100					0		-0.063		
MB145100DU	150	+0.170	145.210	2.465	100	150	+0.04	145	0	1.8±0.6	0.6±0.3
		+0.100					0		-0.063		
MB150100DU	155	+0.170	150.210	2.465	100	155	+0.04	150	0	1.8±0.6	0.6±0.3
		+0.100					0		-0.063		
MB155100DU	160	+0.170	150.210	2.465	100	160	+0.04	155	0	1.8±0.6	0.6±0.3
		+0.100					0		-0.063		
MB16060DU	165	+0.170	160.210	2.465	60	165	+0.04	160	0	1.8±0.6	0.6±0.3
		+0.100					0		-0.063		
MB160100DU	165	+0.170	160.210	2.465	100	165	+0.04	160	0	1.8±0.6	0.6±0.3
		+0.100					0		-0.063		
MB165100DU	170	+0.170	165.210	2.465	100	170	+0.04	165	0	1.8±0.6	0.6±0.3
		+0.100					0		-0.063		
MB170100DU	175	+0.170	170.210	2.465	100	175	+0.04	170	0	1.8±0.6	0.6±0.3
		+0.100					0		-0.063		
MB175100DU	180	+0.170	175.210	2.465	100	180	+0.04	175	0	1.8±0.6	0.6±0.3
		+0.100					0		-0.063		
MB200100DU	205	+0.210	200.216	2.465	100	205	+0.046	200	0	1.8±0.6	0.6±0.3
		+0.130					0		-0.072		
MB220100DU	225	+0.210	220.216	2.465	100	225	+0.046	220	0	1.8±0.6	0.6±0.3
		+0.130					0		-0.072		
MB250100DU	255	+0.260	250.222	2.465	100	255	+0.052	250	0	1.8±0.6	0.6±0.3
		+0.170					0		-0.072		
MB300100DU	305	+0.260	300.222	2.465	100	305	+0.052	300	0	1.8±0.6	0.6±0.3
		+0.170					0		-0.081		